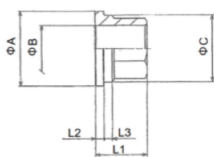


# Union for Welding

## Union (F) SCS13(SUS304)/SCS16(SUS316L)

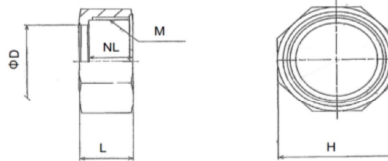


Sleeve



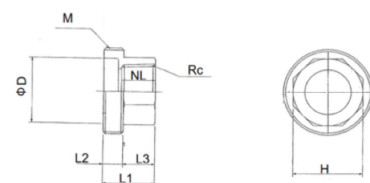
Size	L1	L2	L3	ΦA	ΦB	ΦC	H
8A	15	2.5	2.5	23.5	14.5	21	19
10A	17	3	3.5	28	18.1	25.2	23
15A	18	3	5	32	22.2	29	26.8
20A	22	3	4	39	28.5	35.8	32.8
25A	25	3	5	48	35.5	44.3	40.7
32A	27	4	4.5	57	45.5	53.3	50(10角)
40A	31	4	5.5	64	51	59.3	56(10角)
50A	34	5	5.5	78	65	73.5	69(10角)
65A	42	5.5	6	97	80.5	93	87(10角)

Nut



Size	H	L	D	NL	M
8A	31	14	21.5	11.5	M26X1.5
10A	37	16	25.8	12.5	M31XP2
15A	42	17.5	29.5	13.5	M35XP2
20A	49	18.5	36.3	14.5	M42XP2
25A	59	20	44.9	16	M51XP2
32A	69(10角)	22	53.8	18	M37XP2
40A	78(10角)	24.5	60	19.5	M42XP2
50A	93(10角)	27	74	21.5	M82XP2
65A	112(10角)	30	93.5	24	M100XP2

Nipple



Size	L1	L2	(L3)	ΦD	H	M	RC/G
8A	17	7	10	17	19	M26X1.5	1/4
10A	19	9	10	21	23	M31XP2	3/8
15A	21	9	12	25	27	M35XP2	1/2
20A	24.5	9.5	15	32	33	M42XP2	3/4
25A	27	10	17	39	41	M51XP2	1
32A	30	11.5	18.5	47	50(10角)	M60XP2	1 1/4
40A	33	12	21	55	56(10角)	M68XP2	1 1/2
50A	37	14	23	69	69(10角)	M82XP2	2
65A	42	15	27	83.5	87(10角)	M100XP2	2 1/2