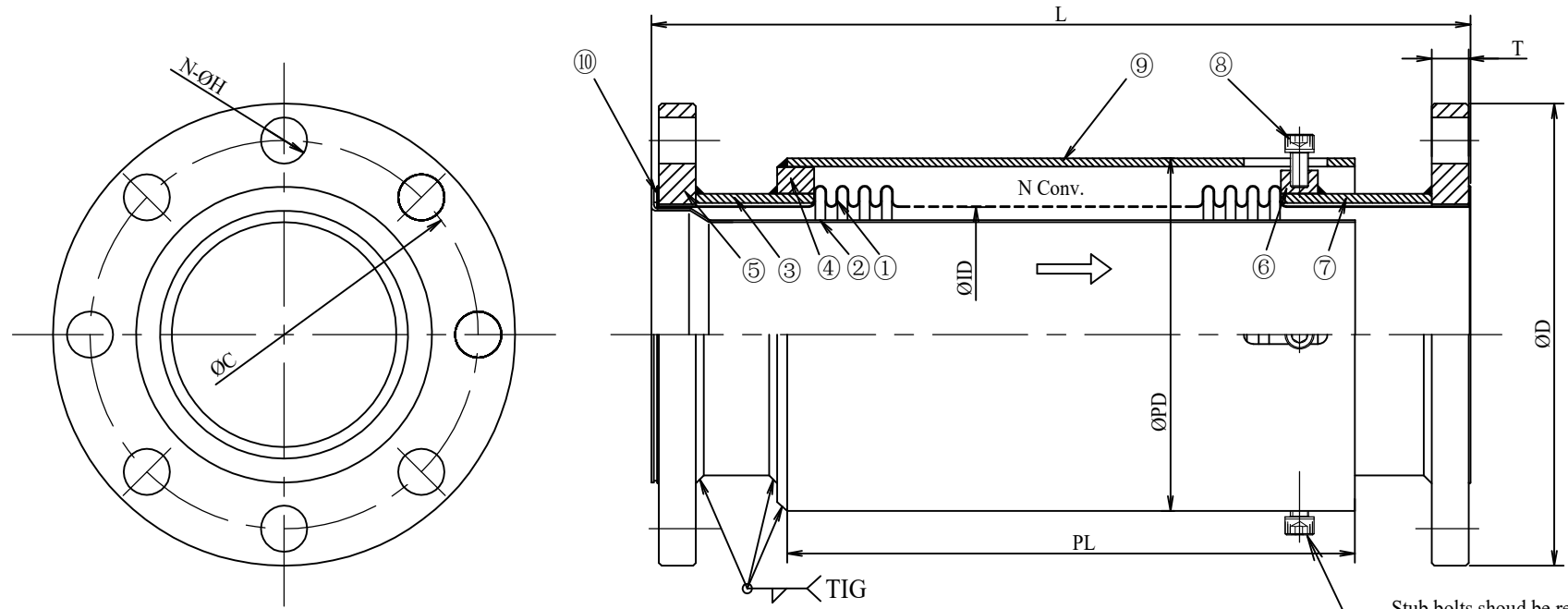


Customer	-
Project	--

MARK	DATE	REV. RECORD	REV. BY	APPR. BY
△				
△				
△				



Stub bolts should be removed after piping is completed.

Size		Pipe		Flange				Bellows		Bolts		Length	Q'ty
DN	Inch	PD	PL	D	C	T	N-H	ID	N	M--	Q'ty	AL	Q
20	3/4	60.5	226	100	75	14	4-15	27	40	M6	4	365±3	-
25	1	60.5	223	125	90	14	4-19	33.5	38	M6	4	365±3	-
32	1-1/4	76.3	161	135	100	16	4-19	42.0	34	M6	4	365±3	-
40	1-1/2	76.3	177	140	105	16	4-19	47.5	32	M6	4	365±3	-
50	2	90.0	168	155	120	16	4-19	59.5	28	M6	4	365±3	-
65	2-1/2	110.0	161	175	140	18	4-19	75	25	M8	4	415±3	-
80	3	125.0	161	185	150	18	8-19	88	21	M8	4	415±3	-
100	4	152.0	172	210	175	18	8-19	113	21	M10	4	415±3	-
125	5	178.0	170	250	210	20	8-23	138	21	M10	4	440±4	-
150	6	208.0	170	280	240	22	8-23	164	16	M10	4	440±4	-
200	8	260.0	174	330	290	22	12-23	216	16	M10	4	440±4	-
250	10	318.0	175	400	355	24	12-25	268	14	M12	4	465±4	-
300	12	362.0	175	445	400	24	16-25	317	13	M12	4	465±4	-

Note:

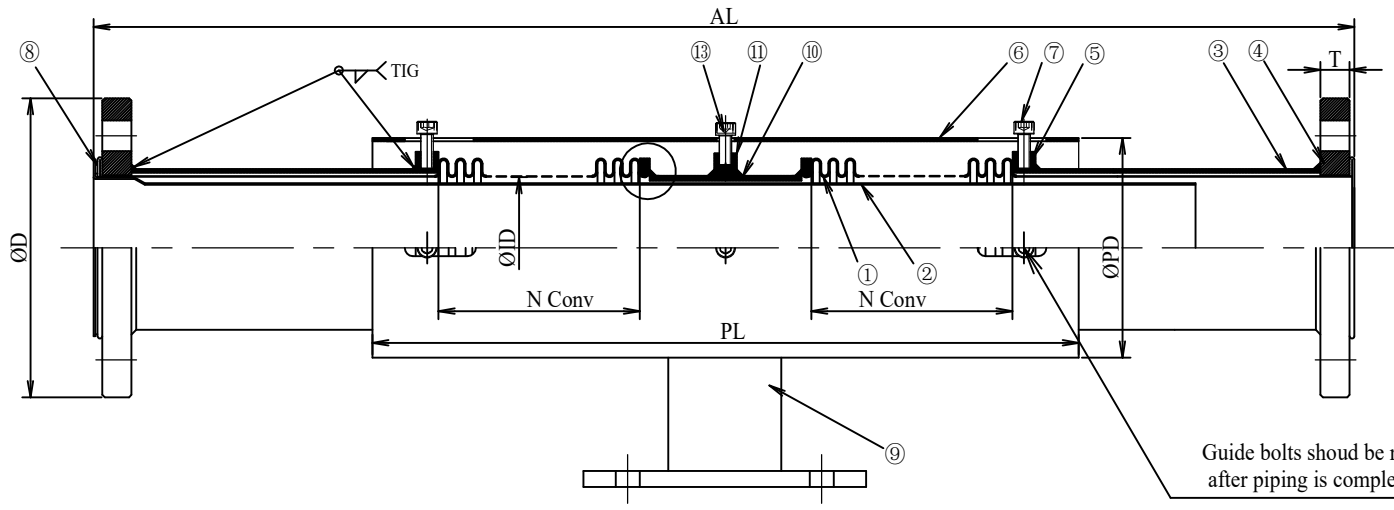
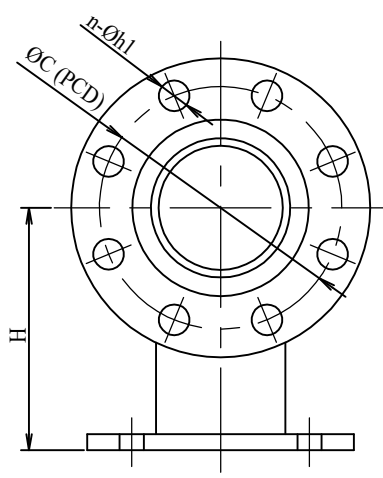
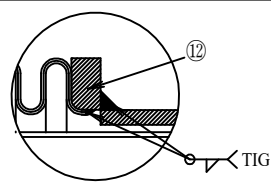
NK7500EXS is not design to absorbing thrust force. So It is necessary to calculate the fixed point strength of pipe, or contact to maker to add tie rods on products.

10	Back-up GK	Non-asbestos	1	V/#300	Customer	-	Product Name	NK-7500EXS Bellows type Expansion Joint			
9	Outer pipe	SGP/SS400	1	-	Nominal Dia	DN20-300	Projection method	⊕ ⊞ ⊞ ⊞		Scale	Free
8	Stud bolts	SS400	-	M-	Length	L---	Date	Approved	Checked	Drawn	
7	End pipe 2	SGP/SS400	1	-	Fluid	-	20/05/2022	-	Dat	Sang	
6	Neck ring 2	SS400	1	-	Design press	0.1 Mpa					
5	Flange	SS400/SUS304	2	JIS 10K	Design tem.	220 °C					
4	Neck ring 1	SS400	1	-	Hydro test	- Mpa					
3	End pipe 1	SPG/SS400	1	-	Pneum. test	- Mpa					
2	Internal sleeve	SUS304/316L	1	-	Bend radius	- mm					
1	Bellows	SUS304+316L	1	10 - 1 ply/2ply	Axial move	+10/-25 mm					
No	Parts name	Material	Q'ty	Remark	Lateral move	- mm	Draw No	NFK-VN000***			

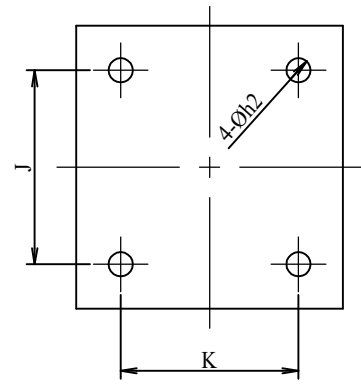
A Member Of Nagoku Flexible Hose Industry
NFK VIET NAM CO.,LTD

Customer	-
Project	--

MARK	DATE	REV. RECORD	REV. BY	APPR. BY
△				
△				
△				



Guide bolts should be removed after piping is completed.



Size	Pipe		Flange				Bellows		Anchor				Guide Bolts		Length	Q'ty	
DN	Inch	PD	PL	D	C	T	n-h1	ID	N	J	K	H	h2	M--	Q'ty	AL	
20	3/4	60.5	550.0	100	75	14	4-15	27	32	100	60	100	12	M10	8	680±4	-
25	1	60.5	543.0	125	90	14	4-19	33.5	27	100	60	100	12	M10	8	680±4	-
32	1-1/4	76.3	420.0	135	100	16	4-19	42.0	16	100	70	120	12	M10	8	680±4	-
40	1-1/2	76.3	452.5	140	105	16	4-19	47.5	17	100	70	120	12	M10	8	680±4	-
50	2	90.0	433.0	155	120	16	4-19	59.5	15	100	80	130	15	M12	8	680±4	-
65	2-1/2	110.0	431.5	175	140	18	4-19	75	12	120	100	140	15	M12	8	780±4	-
80	3	125.0	431.5	185	150	18	8-19	88	11	120	110	150	15	M12	8	780±4	-
100	4	152.0	462.0	210	175	18	8-19	113	11	120	130	170	19	M16	8	880±4	-
125	5	178.0	457.0	250	210	20	8-23	138	10	120	150	200	19	M16	8	880±4	-
150	6	208.0	457.0	280	240	22	8-23	164	10	160	180	220	23	M20	8	930±4	-
200	8	260.0	471.0	330	290	24	8-19	216	9	160	220	250	25	M22	8	930±4	-
250	10	318.0	475.0	400	355	24	12-25	268	9	180	280	300	27	M24	8	980±4	-
300	12	362.0	475.0	445	400	24	16-25	317	9	200	300	350	27	M24	8	980±4	-

Note:

- 1.
- 2.
- 3.

10	Middle pipe	SUS304	1	-	Customer	-	Product Name	NK-7700EXD Bellows type Expansion Joint				
9	Anchor base	SS400	1 set	JIS B2352	Nominal Dia	DN20~300	Projection method	⊕	↔	Scale	Free	
8	Gasket	Non-asbestos	1	-	Length	L--	mm					
7	Guide bolts	SS400	-	M--	Fluid	-	Date	Approved	Checked	Drawn		
6	Outer pipe	SGP/SS400	1	-	Design press	0.1	20/05/2022	-	Dat	Sang		
5	Neck ring 1	SS400	2	-	Design tem.	220						
4	Flange	SS400/SUS304	2	JIS 10K FF	Hydro test	-						
13	Stub bolts	SS400	-	M--	3	End pipe	SGP/SS400	2	-	Pneum. test	-	Mpa
12	Neck ring 2	SUS304	2	-	2	Internal sleeve	SUS304/316L	1	-	Bend radius	-	mm
11	Middle ring	SS400	1	-	1	Bellows	SUS304+316L	2	IO - 1ply/2plies	Axial move	+20/-50	mm
No	Parts name	Material	Q'ty	Remark	No	Parts name	Material	Q'ty	Remark	Lateral move	-	mm

A Member Of Nagoku Flexible Hose Industry
NFK VIET NAM CO.,LTD

Draw No NFK-VN000***