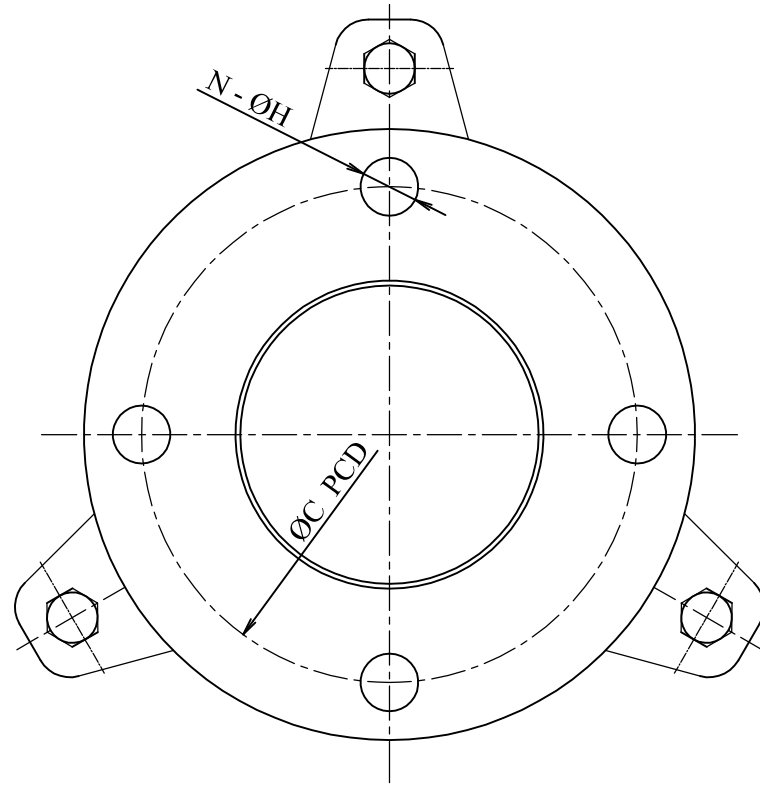
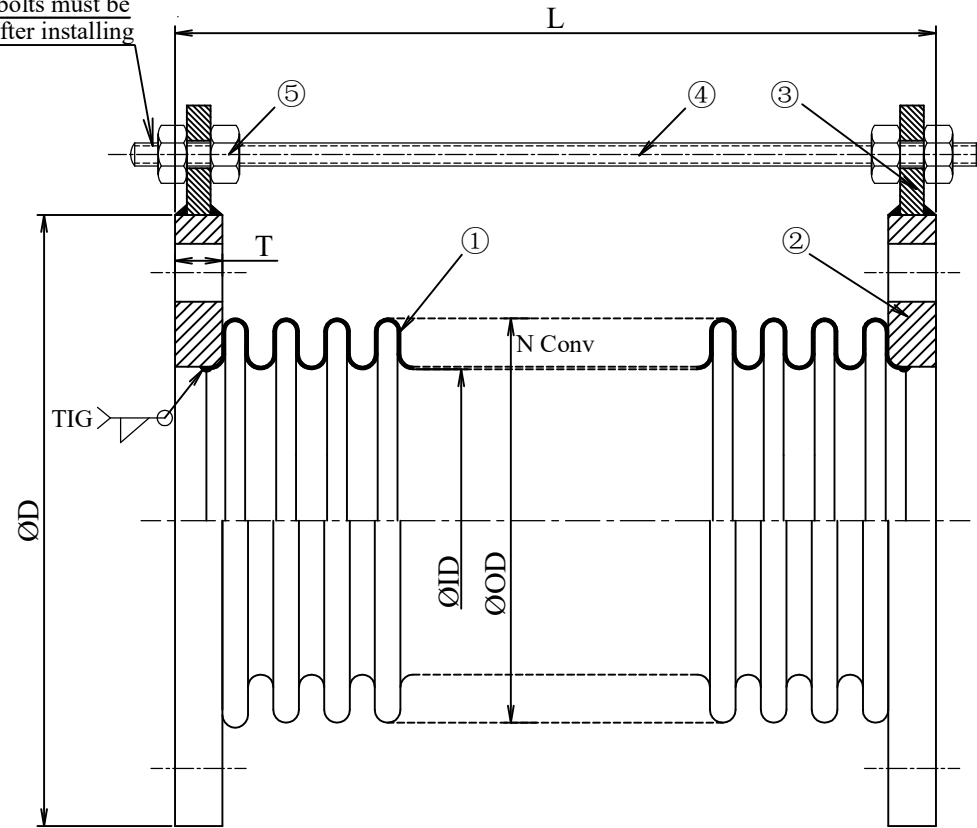


MARK	DATE	REV. RECORD	REV. BY	APPR. BY
△				
△				
△				



Shipping bolts must be removed after installing



Size		Flange				Bellows			Le.	Q'ty
DN	Inch	D	C	T	N-H	ID	OD	N	L	Q
50	2	155	120	16	4-19	60	81.2	-	-	-
50	2	155	120	16	4-19	60	91.2	-	-	-
65	2-1/2	175	140	18	4-19	76	107.2	-	-	-
80	3	185	150	18	8-19	89	120.6	-	-	-
100	4	210	175	18	8-19	114	156.0	-	-	-
125	5	250	210	20	8-23	139	201.4	-	-	-
150	6	280	240	22	8-23	165	227.4	-	-	-
200	8	330	290	22	12-23	216	278.4	-	-	-
250	10	400	355	24	12-25	265	327.4	-	-	-
250	10	400	355	24	12-25	265	348.0	-	-	-
300	12	445	400	24	16-23	318	380.4	-	-	-
300	12	445	400	24	16-23	318	401.0	-	-	-
350	14	490	445	26	16-25	356	439.0	-	-	-

Note:

- 1.
- 2.
- 3.

10	-	-	-	-	Customer	-	Product Name	NK-7900		
9	-	-	-	-	Nominal Dia	DN50~350	Bellows type Expansion Joint			
8	-	-	-	-	Length	L--- mm	Projection method		Scale	Free
7	-	-	-	-	Fluid	-	Date	Approved	Checked	Drawn
6	-	-	-	-	Design press	0.1 Mpa	19/05/2022	-	Dat	Sang
5	-	-	-	-	Design tem.	40 °C				
4	Shipping bolts	SS400	3	M12	Hydro test	- Mpa	A Member Of Nagoku Flexible Hose Industry NFK VIET NAM CO.,LTD			
3	Holder	SS400	6	For M12	Pneum. test	- Mpa				
2	Flange	SUS304/SS400	2	JIS 10K	Bend radius	- mm				
1	Bellows	SUS304	1	MF type	Axial move	- mm				
No	Parts name	Material	Q'ty	Remark	Lateral move	- mm				
							Draw No	NFK- VN000***		